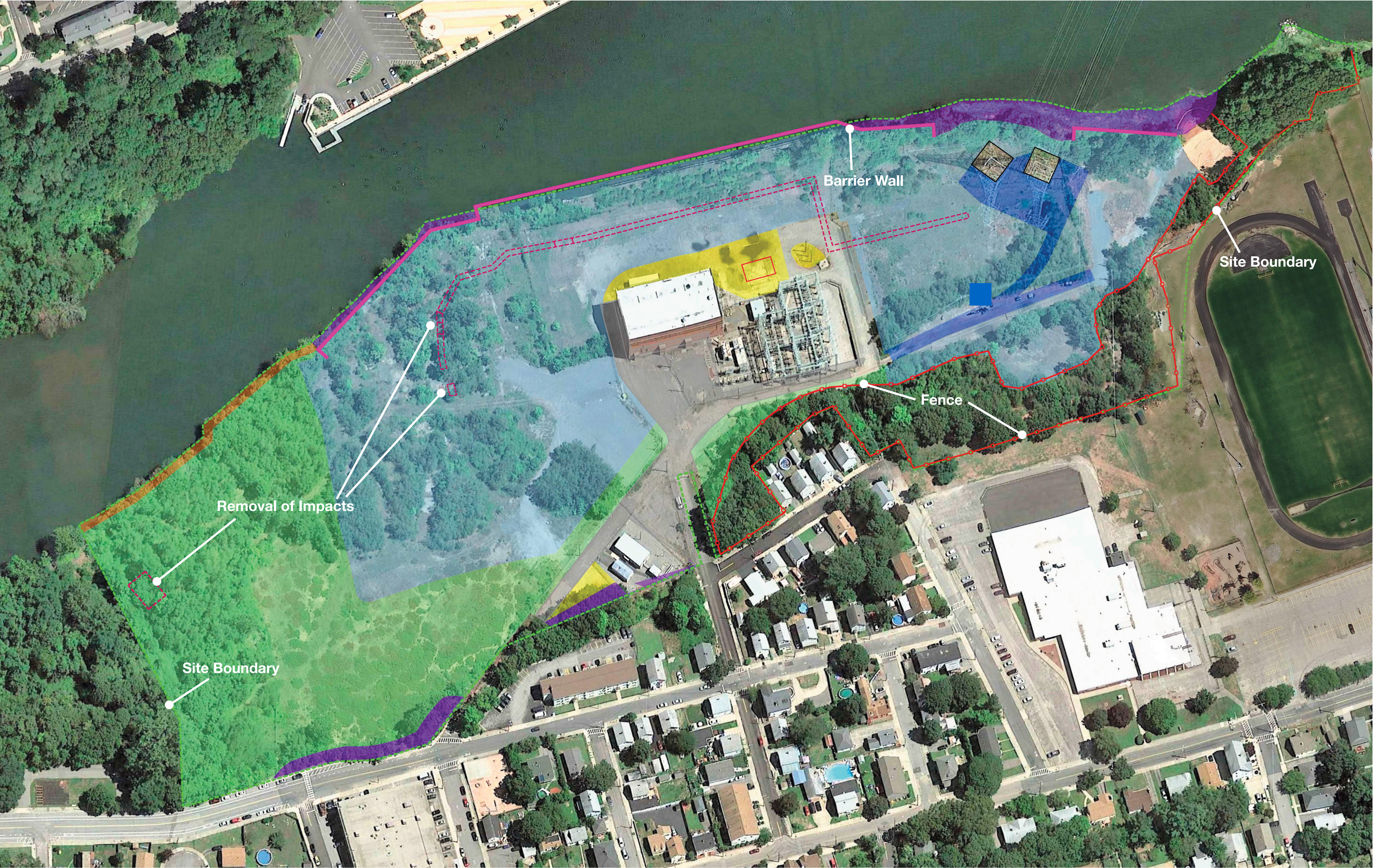
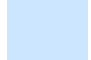








REMEDIAL LAYOUT PLAN

4

The remedy for the Site consists of targeted removal of certain impacts, installation of a subsurface barrier wall designed to protect the Seekonk River and the use of engineered caps to isolate impacts. This remedy was selected based on its ability to address Site impacts while minimizing community disturbance during implementation.



ENGINEERED CAP LEGEND	
	Impermeable Soil Cap
	Permeable Soil Cap
	Paved Cap
	Crushed Stone Cap
	Rip Rap Cap
	Rip Rap for Cap Stabilization
	Dense Grade Impermeable Cap

FOR MORE INFORMATION, PLEASE VISIT WWW.TIDEWATERSITE.COM

nationalgrid