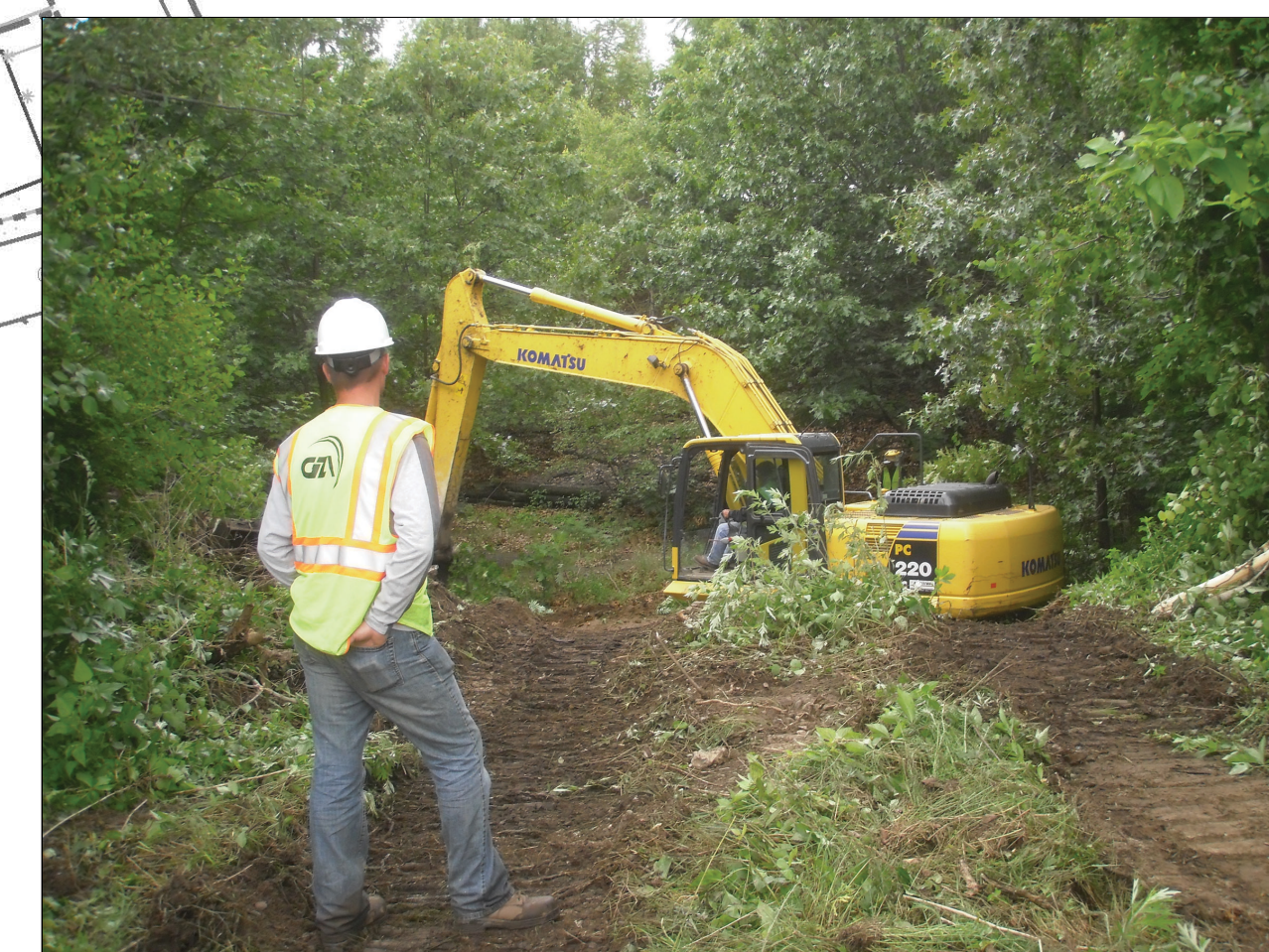
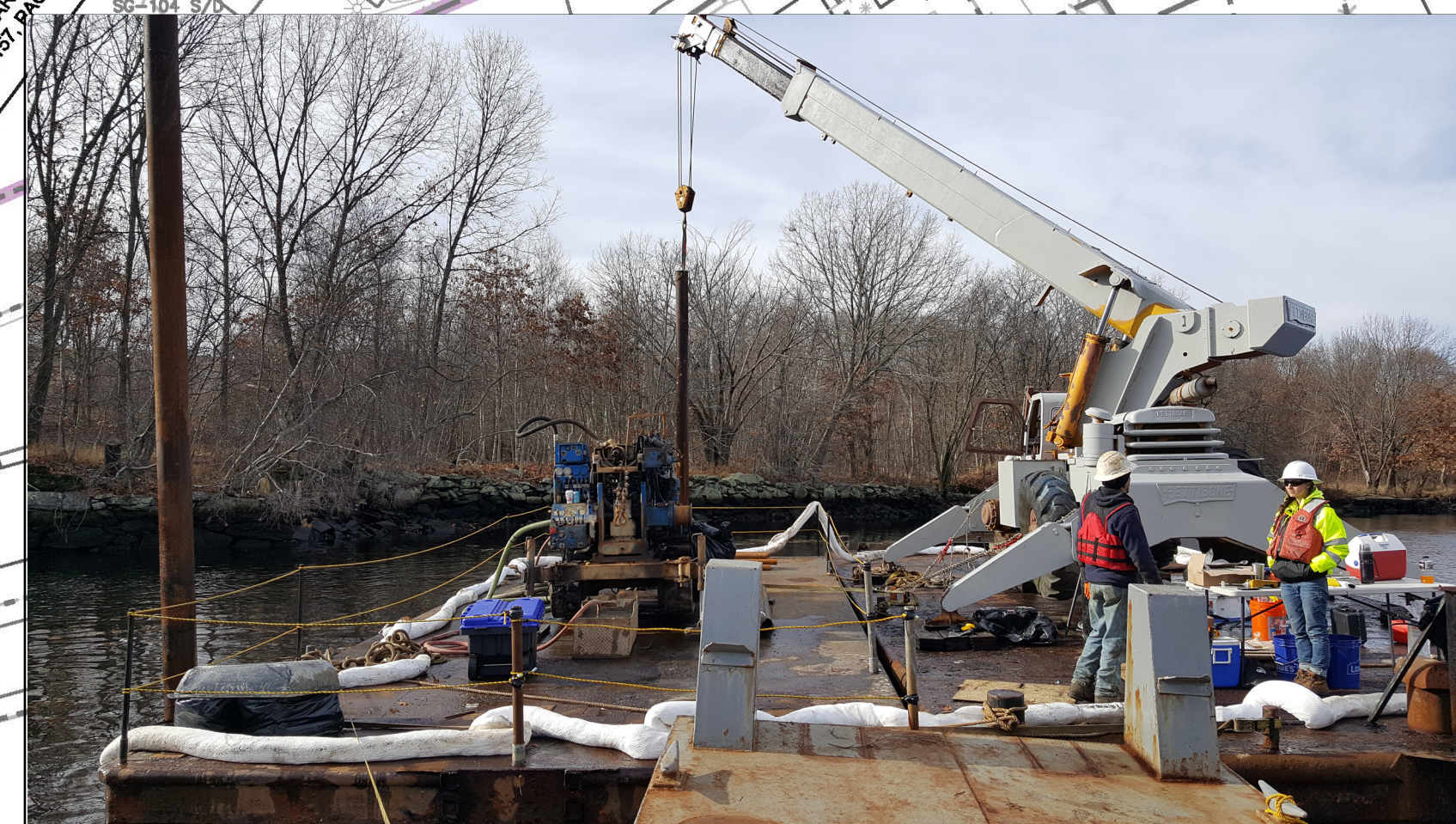


3

As outlined in red on the schematic below, National Grid completed:

- # STUDYING THE TIDEWATER SITE
- National Grid has extensively studied the Tidewater Site. To facilitate preparation of the Remedial Action Work Plan (RAWP), Limited Design Investigations (LDIs) were performed to supplement the existing data.
- As outlined in red on the schematic below, National Grid completed:
- Collection and analysis of 70 surface soil samples
 - Performance of 64 test pits
 - Performance of 23 test borings
 - Seekonk River depth survey
 - Three-dimensional numerical groundwater model
-
- Figures from Investigation - Drilling and Test Pitting Activities
-
- FOR MORE INFORMATION, PLEASE VISIT WWW.TIDEWATERSITE.COM
- nationalgrid**

Pictures from Investigation - Drilling and Test Pitting Activities



nationalgrid