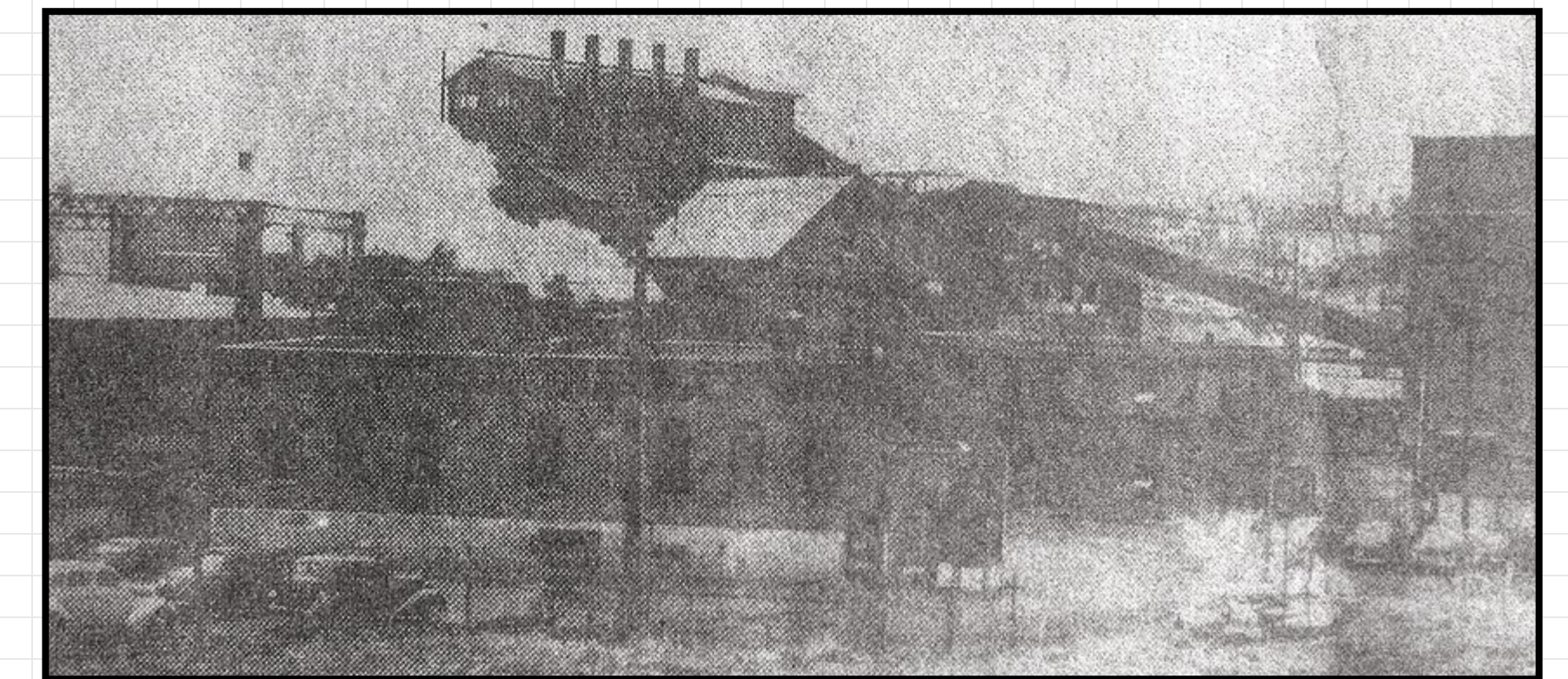


SITE HISTORY



1881

The Pawtucket Gas Company constructed the Tidewater Manufactured Gas Plant (MGP) to produce manufactured gas from coal and oil using industrial processes.

1908

Blackstone Valley Gas and Electric Company (BVG&E) bought the North Fill Area (NFA) from Olney and Payne Brothers and the Former Gas Plant Area (FGPA) and Former Power Plant Area (FPPA) from the Pawtucket Gas Company.

1938

The Great Hurricane of 1938 caused significant damage to the MGP and power plant.

1954

Majority of MGP operations ceased, although oil gas was produced on an as-needed basis, as required by available natural gas until approximately 1968.

1961

Valley Gas Company (VGC) acquired the MGP and the NFA from BVG&E.

1968

The Blackstone Valley Electric Company (BVEC) acquired the power plant and portions of the southernmost section of the Site from BVG&E. The MGP is officially decommissioned. The City of Pawtucket acquired portions of the southernmost section.

1995

Letter of Responsibility issued by Rhode Island Department of Environmental Management (RIDEM) to BVEC and VGC and the former Tidewater facility becomes the Tidewater Site.

2006

- National Grid acquires the gas utility and the FGPA and the NFA.
- Facility upgrades to the duct bank in the Pawtucket No. 1 Substation.

Period of MGP Operations

National Grid Ownership of the Former Gas Plant Area and the North Fill Area

1880

1900

1920

1940

1960

1980

2000

2020

Period of Active Power Plant Operations

National Grid Ownership of the Former Power Plant Area and the South Fill Area

1890

Construction of the power plant by the Pawtucket Gas Company.

1923

Power plant changed its primary fuel from coal to oil.

1962

The transmission towers are first evident in historical records for the power plant.

1975

The power plant is officially decommissioned.

1986

Site Investigations begin.

2000

National Grid acquires the electric utility and the FPPA and the South Fill Area (SFA).

2009—2013

- Facility upgrades include:
- Transmission towers
 - Natural Gas Regulating Station
 - Gasholders Nos. 7 and 8 decommissioned and demolished
 - Pawtucket No.1 Substation and Switching Station

