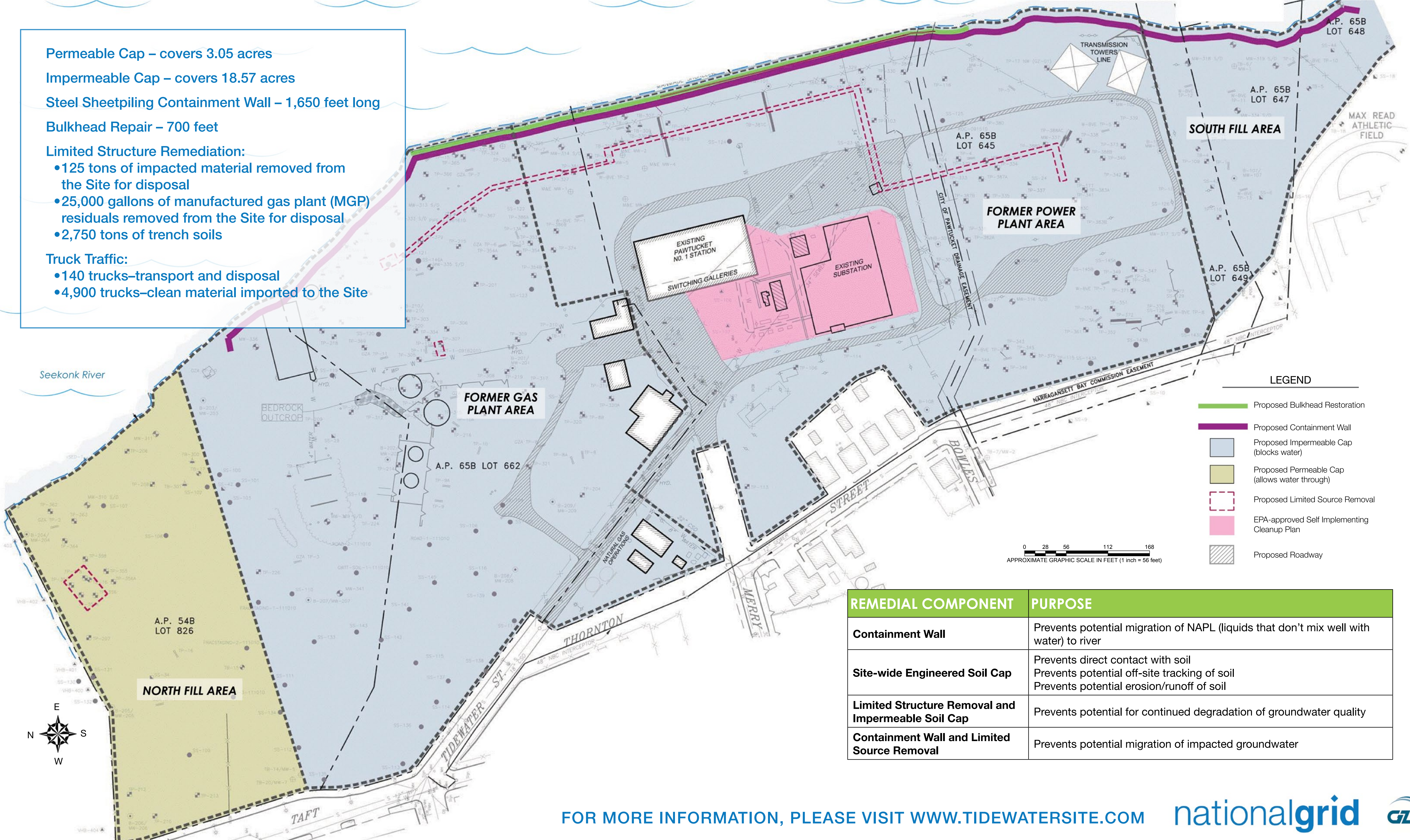


PREFERRED REMEDIATION PLAN

Engineered Cap, Physical Containment and Removal of Some Materials

- Permeable Cap – covers 3.05 acres
- Impermeable Cap – covers 18.57 acres
- Steel Sheetpiling Containment Wall – 1,650 feet long
- Bulkhead Repair – 700 feet
- Limited Structure Remediation:
 - 125 tons of impacted material removed from the Site for disposal
 - 25,000 gallons of manufactured gas plant (MGP) residuals removed from the Site for disposal
 - 2,750 tons of trench soils
- Truck Traffic:
 - 140 trucks—transport and disposal
 - 4,900 trucks—clean material imported to the Site



LEGEND

-  Proposed Bulkhead Restoration
-  Proposed Containment Wall
-  Proposed Impermeable Cap (blocks water)
-  Proposed Permeable Cap (allows water through)
-  Proposed Limited Source Removal
-  EPA-approved Self Implementing Cleanup Plan
-  Proposed Roadway

0 28 56 112 168
APPROXIMATE GRAPHIC SCALE IN FEET (1 inch = 56 feet)

| REMEDIAL COMPONENT | PURPOSE |
|---|--|
| Containment Wall | Prevents potential migration of NAPL (liquids that don't mix well with water) to river |
| Site-wide Engineered Soil Cap | Prevents direct contact with soil Prevents potential off-site tracking of soil Prevents potential erosion/runoff of soil |
| Limited Structure Removal and Impermeable Soil Cap | Prevents potential for continued degradation of groundwater quality |
| Containment Wall and Limited Source Removal | Prevents potential migration of impacted groundwater |

FOR MORE INFORMATION, PLEASE VISIT WWW.TIDEWATERSITE.COM